



# Kasa Filament Smart Bulb

Soft White



KL50



Remote Control



Dimmable



Energy Efficiency



Device Grouping



Voice Control

# Highlights

## Smart and Stylish

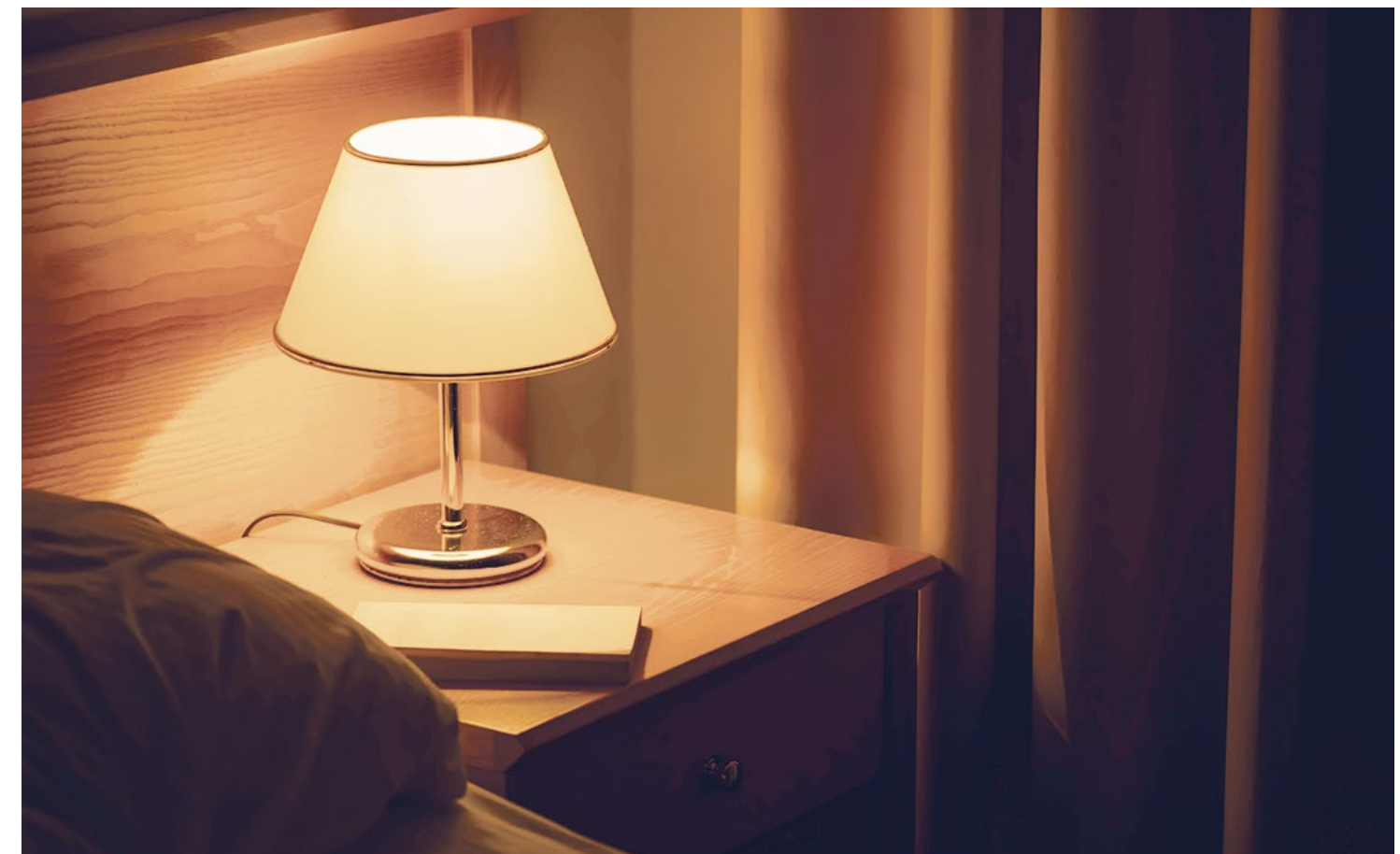
Replace other bulbs with a smart, energy efficient LED filament bulb that's more intelligent and can be controlled from anywhere with the Kasa Smart app or with simple voice commands via Google Assistant, Alexa or SmartThings.



\*The Alexa and Google Assistant are not available in all languages and countries.

## Energy Efficiency

Consumes 80% less power than an incandescent bulb. Set schedules and monitor energy consumption through the Kasa Smart app for even more efficiency.



# Highlights

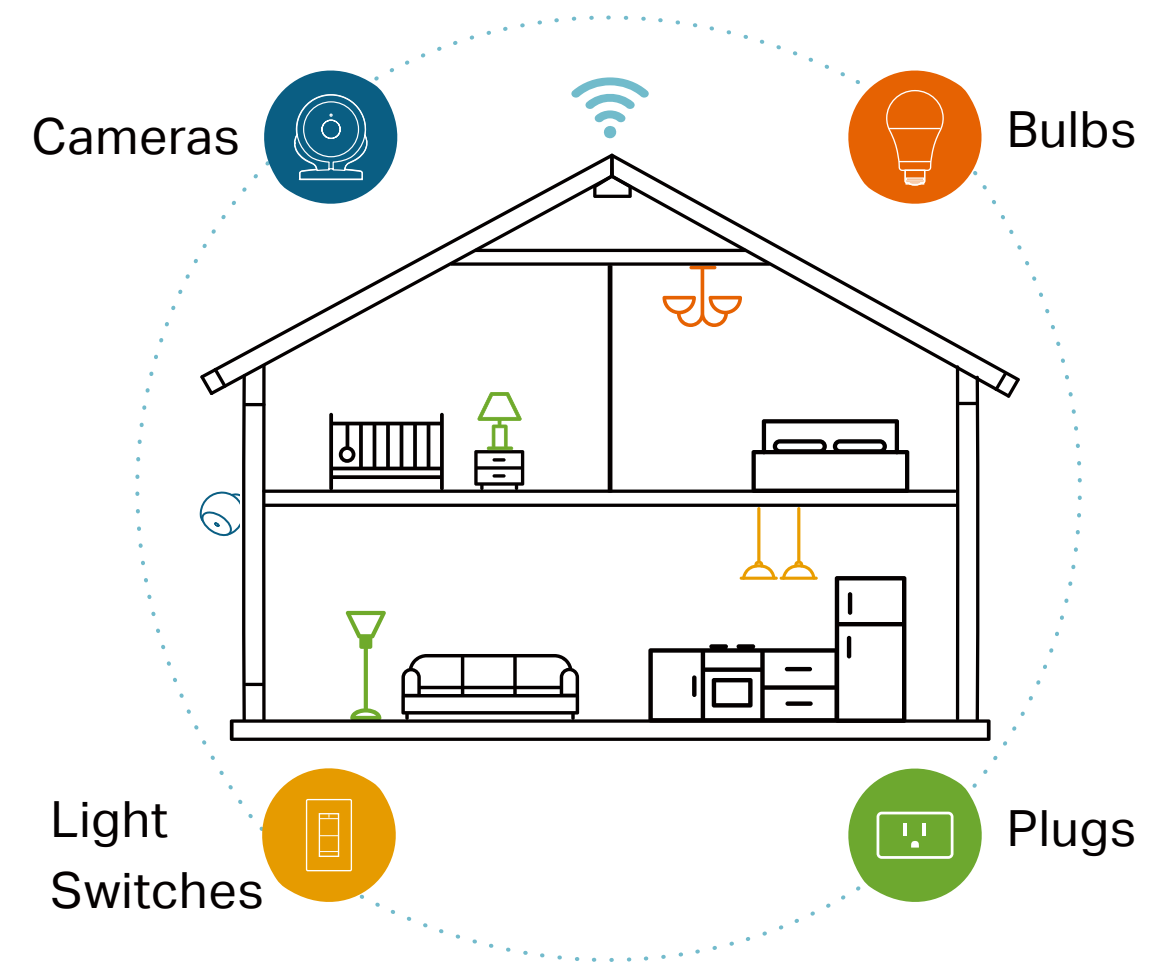
## Device Grouping

Use Grouping to combine your Kasa devices with other Kasa Smart devices for seamless control with one single tap on your smartphone.



## Your Home. One App.

With the Kasa Smart app, you can easily access and control smart plugs, cameras, light switches, bulbs and more. Checking in on your home is only a few taps away.



Learn more at [tp-link.com/smarthome](https://tp-link.com/smarthome)

# Features



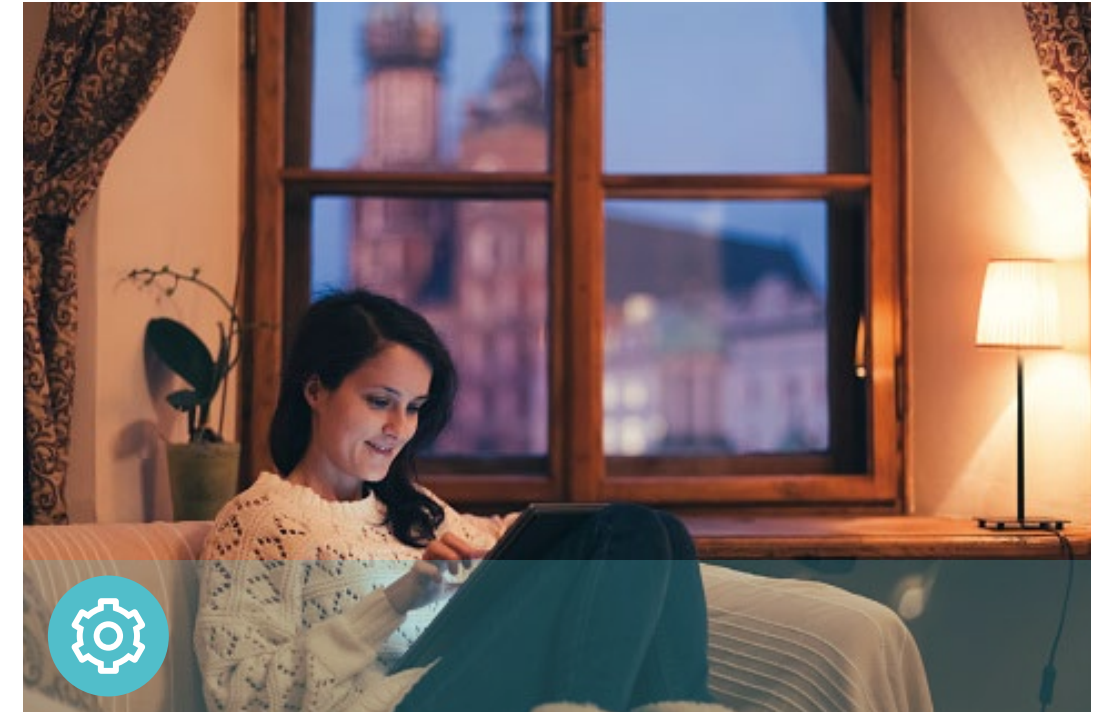
## Ease of Use

- No Hub Required – Connect to your existing Wi-Fi router with no extra hub required
- Easy Setup – Download the Kasa Smart app and follow the setup instructions for your bulb
- Remote Control – Control your smart bulbs from anywhere with the free Kasa Smart app
- Scheduling – Set schedules to turn on/off the smart bulbs at any chosen time for your convenience
- Multi-scene – Save your light settings as different scenes to enjoy instant access to them
- Smart Actions – With Smart Actions, your Kasa devices can work together to create a smarter smart home



## Compatibility

- Works with Voice Assistants – Control smart bulbs using the leading voice assistants such as Alexa, Google Assistant
- Compatible with Android, iOS – The free Kasa Smart app lets you run smart bulbs from any Android (5.0 or higher) or iOS (iOS 10 or higher) devices
- Works with SmartThings – Control and manage your Kasa devices with SmartThings



## Lighting

- Dimmable Light – Kasa Smart's LED filament bulb has an expansive dimming range that can be controlled conveniently with the Kasa Smart app

# Specifications

## Technical Specifications

- Light Beam Angle: 290 degrees
- Color Temperature: 2700 K
- Rated Input Voltage: 220~240 V, 50/60 Hz
- Switching Cycles: 15000
- Dimmable: Yes (via app and cloud only)
- Warm-up Time up to 95%: < 1 s
- Color Rendering Index: > 80
- Wattage: 7 W
- Brightness: 800 lumens
- Weighted Energy Consumption: 7 kWh/1000 h

## Network

- Secured home Wi-Fi connection required
- Wi-Fi Protocol: IEEE 802.11b/g/n
- Wi-Fi Frequency: 2.4 GHz

## General

- Package Contents:
  - Filament Smart Bulb
  - Quick Start Guide
- Form Factor: A60 bulb, E27 fitting
- Lamp Dimensions: 4.72\*2.36 inch (120 mm\*60 mm)
- Certifications: CE, ERP, RoHS
- Energy Class: A++ (ERP 1.0), E (ERP 2.0\*)
- Operating Temperature: -15 °C~ 40 °C (5 °F ~ 104 °F )
- Operating Humidity: 10%~90% RH, Non-condensing

\*Why did I get two different energy labels with my product? <https://www.label2020.eu/the-new-label/double-labeling/>

Specifications are subject to change without notice. The Works with SmartThings words and logo are trademarks of Samsung Electronics Co. Ltd. All brands and product names are trademarks or registered trademarks of their respective holders.

©2022 TP-Link

[www.tp-link.com](http://www.tp-link.com)